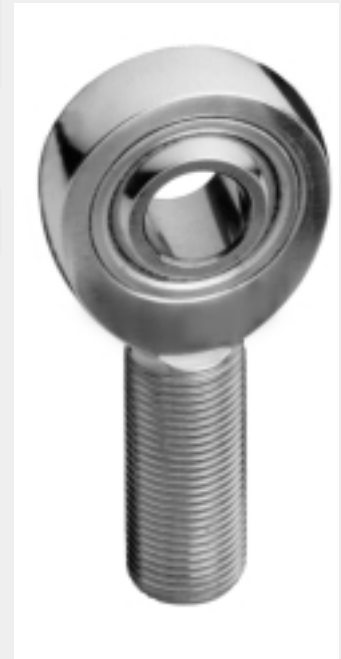
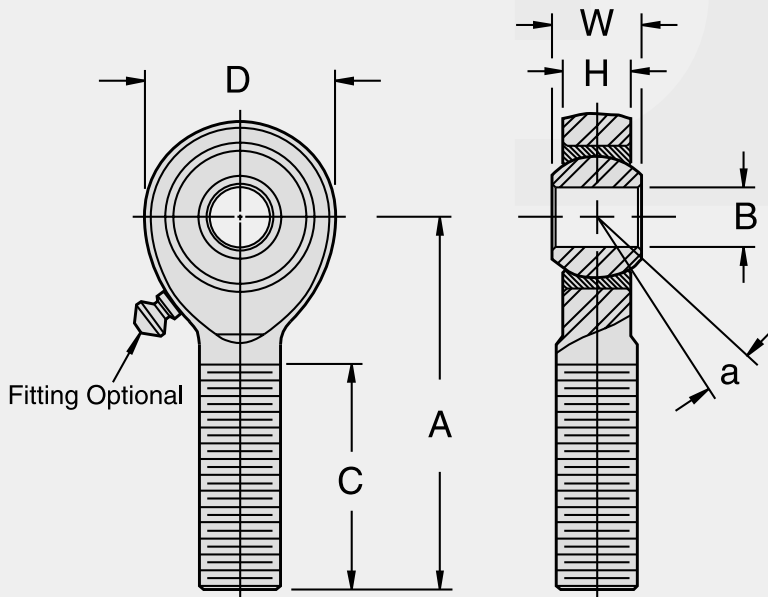


RM

3-Piece, Metal to Metal, Extra Strength,
Heavy Duty Shank



Part Number		B +0.0025 -0.0005	W +0.000 -0.005	H ±.005	A ±.015	D ±.010	REF	C +0.062 -0.031	UNF-3A	a°	Ultimate Radial Static Load Capacity (Pounds)	Approx. Weight (Pounds)
Right Hand	Left Hand	Ball Bore	Ball Width	Housing Width	Centerline Length	Head Diameter	Ball Diameter	Thread Length	Thread Size	Misalign Angle		
RM3	RML3	.1900	.312	.250	1.562	.750	.437	1.000	1/4-28	10	2,158	.043
RM4	RML4	.2500	.375	.281	1.875	.875	.500	1.250	5/16-24	13	3,467	.072
RM5	RML5	.3125	.437	.344	1.938	1.000	.625	1.250	3/8-24	12	5,323	.112
RM6	RML6	.3750	.500	.406	2.125	1.125	.719	1.375	7/16-20	10	7,180	.160
RM7	RML7	.4375	.562	.437	2.438	1.312	.812	1.500	1/2-20	12	9,620	.249
RM8	RML8	.5000	.625	.500	2.625	1.500	.937	1.625	5/8-18	10	12,807	.382
RM10	RML10	.6250	.750	.562	2.875	1.750	1.125	1.750	3/4-16	13	16,565	.602
RM12	RML12	.7500	.875	.687	3.375	2.000	1.312	1.875	7/8-14	12	22,803	.920

MATERIALS

Ball

52100 Steel
Rc 56 Min.
Hard Chrome Plated

Body

Low Carbon Steel
Zinc Plated
Clear Chromate
Treated

Race

Alloy Steel
Heat Treated
Zinc Plated
Clear Chromate
Treated

NOTES:

- For standard zerklubrication fitting add "Z" to suffix. Example: RM8Z
- This series is also available in a studded configuration. (Refer to chart in this catalog on page 66) Specify by adding "S" to suffix. Example: RM8S